



DETECTRONIC

INTELLIGENT FLOW MANAGEMENT TO  
PREVENT AND REDUCE POLLUTION



CAPABILITY

# Predicting blockages, reducing flooding and improving network performance

Sewer network monitoring that's tailored to meet the needs of the world's water utilities, flow survey companies and consulting engineers

The most **cost-effective** and **technologically advanced** flow measurement system in the UK today!

## SQUEEZE EVERY LAST DROP OF VALUE FROM YOUR SEWER NETWORK DATA

Detectronic is a specialist supplier of waste water network monitoring systems, delivering real time monitoring solutions with near real time analytics which enable our Customers to **reduce their flooding and pollution and save money.**

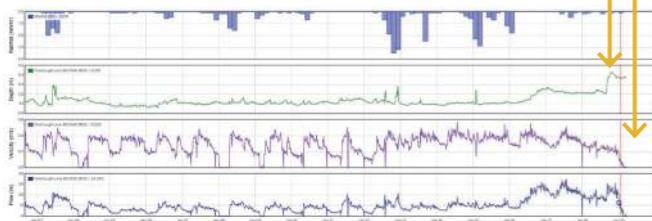
*Detectronic makes the difference between efficient network management and network failure.*

### PREVENTATIVE INTERVENTION

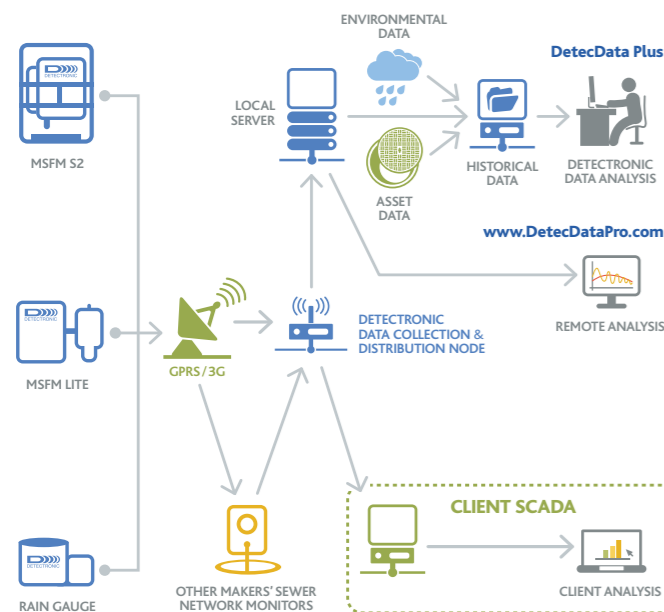
Detectronic's unique system of monitoring and analytics is proven to deliver timely notice of instantaneous blockages **AND** - more valuably - Preventative Intervention Reports providing early warning of network failure.

SCADA Systems tend to operate 'Blanket Suppression' of alarms reporting high-levels during rainfall events which inevitably means that actionable events are not recognised.

Increase in depth and drop off of velocity indicating a potential downstream blockage



### SUCCESSFUL DATA HARVESTING



### FULL CIRCLE NETWORK AND MANAGEMENT

Using products and information to understand and meet your AMP 6 ODIs (Outcome Delivery Incentives).

During 2014, Detectronic's Operations Centre monitored **25,780 machine-generated alarms.**

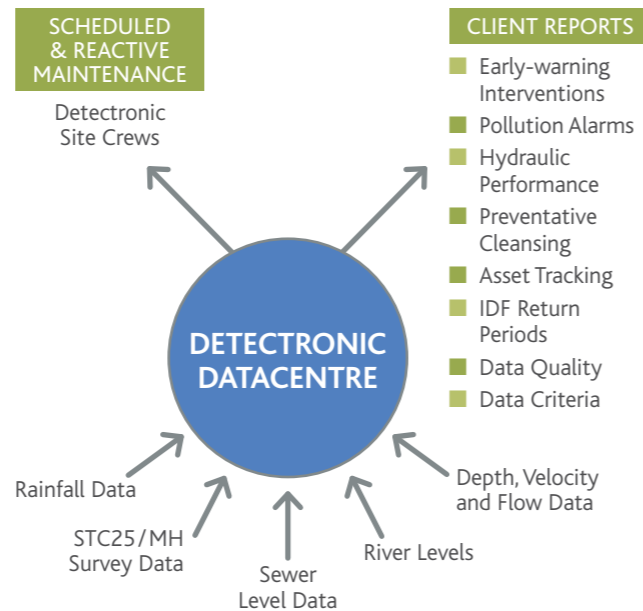
Intelligent Processing and Data Analysis revealed 203 valuable, timely interventions, **some 80% of which were early-warning 'preventative' reports.**

- Improve Compliance
- Meet and Exceed ODI targets
- Increase Customer Satisfaction



Detectronic helps you to **get it right and generate measurable cost benefits.**

### UNDERSTANDING THE NETWORK



## DATA COLLECTION AND NETWORK MONITORING - DELIVERING AMP 7 OUTCOMES IN AMP 6

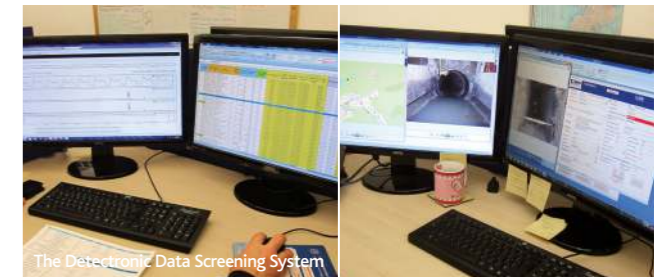
Since the mid-1970s members of our design team have been involved in the development of sewer monitoring products and services, working with water utilities, their suppliers and leading waste-water flow survey companies.

- Specialists in the design, manufacture, marketing and maintenance of Sewerage Network Monitoring equipment from simple Level Monitors through to sophisticated Multi-sensor velocity-area Flow Meters.
- MSFM Flow Measurement Systems offer built-in GPRS remote data communication as standard throughout the range.
- Independently assessed by Sira Test and Certification Ltd and certified to both ATEX and IECEx international safety standards for use in Zones 0, 1 and 2 hazardous operating environments.

### Detectronic Data Screening

The difference between successful early intervention and network failure. To get the most out of your network monitoring programme, our Data Technicians will develop normalised data profiles for all monitored sites and develop (site by site) predictive criteria for early preventative intervention - predicting blockages, reducing flooding and improving network performance.

Data Centre analytics can be 'retro-fitted', which means we can apply our processes to your existing data-flow, regardless of the make of monitors installed.



### ATEX MSFM GPRS Multi Sensor Flow Monitor S2U

A versatile, battery-powered Flow Measurement System optimised for sewerage network, surface-water and other open channel monitoring applications.

This remote-reporting Flow Measurement System for Water and Wastewater applications is designed to monitor raw sewage, industrial effluents and storm waters.

Automatic GPRS data retrieval is included as standard and can be used worldwide. A third input accepts either Detectronic's Ultrasonic Level Sensor or the PTI Pressure-Depth Sensor, particularly useful for more complex Storm Overflow Monitoring applications.

### ATEX MSFM-Lite GPRS Ultrasonic Level / Pressure Depth Monitor S2U

Certified to ATEX Zone 0, MSFM-Lite is specifically designed to measure Levels in Sewerage Networks and Combined Sewer (Storm) Overflows (CSOs), but can also be used for remote monitoring of tank levels located in potentially explosive atmospheres.

It uses sophisticated power saving technology to provide up to **5 years** battery life - significantly longer than other manufacturers and more cost-effective than traditional, hard-wired mains-powered ultrasonic sensors.



### PRESSURE TRANSDUCER INTERFACE

Newly developed by Detectronic, the ATEX Zone 0 certified PTI sensor connects to either the MSFM Lite or the MSFM S2U and allows measurement of water depth in situations where the Ultrasonic Probe is not appropriate. Accurate to +/- 1mm and, with a resolution to match, it is available with measurement ranges in excess of 10m.

Using Detectronic's proven power saving technology, a 5 year battery life is easily achieved.



### MSFM GPRS Remote Rainfall Monitoring System

MSFM RG combines a high quality robust, reliable, precision Rainfall measuring device and Detectronic's MSFM GPRS Data Logger.

MSFM RG provides fully automated transmission of Rainfall Data to synchronise with all of Detectronic's data-hosting platforms such as [www.detecdata.com](http://www.detecdata.com)

Detectronic also offers a wide range of supplementary equipment and monitoring software to help you keep on top of your data collection and flow monitoring needs.







## FULL CIRCLE NETWORK MANAGEMENT

Detectronic provides the most cost-effective and technologically advanced flow measurement system in use today! Focused on measuring, recording, reporting and reacting to monitored Depths and Flow Rates in waste-water channels - including sewers, storm drains and combined sewer overflows, as well as highway and land drains.

When you choose Detectronic, you are entering into a partnership with one of the world's foremost experts in Specialist Measurement Technologies, giving you access to:

- Water industry expertise developed since 1974.
- Product design, manufacture and supply of flow and level instrumentation for sewerage networks.
- Specialist installation teams.
- Trained maintenance teams - routine and responsive.
- In-house data screening technicians, leading to catchment characterisation and understanding of network performance.
- Dedicated to serving Water and Sewerage Utilities.
- Robust measurement solutions designed with embedded remote-communication technology at the heart of the system.

### METERS, MONITORING AND MANAGEMENT

At Detectronic it is our mission to provide you with the most robust and cost-effective network monitoring system available anywhere in the world today.

Comparing near-real-time data with historical site data our automated systems and highly-skilled analysts can quickly identify what is happening in your sewers and drainage networks and respond accordingly with intervention recommendations.

### FULL CIRCLE FLOW CONTROL

#### Your Guarantee of Network Quality Assurance

With our help, you can benefit from all of the Detectronic flow and level measurement and analytical systems available - and rest assured that there will be no false alarms, just solid, dependable data intelligence to help improve the operation of your sewerage networks. **Guaranteed.**

Detectronic systems, products and services are certified and audited to the following standards:



### THE UK'S LEADING NETWORK MONITORING SYSTEM

- Flood Risk reduction through preventative intervention reporting
- Save money. Eliminate fines for pollutions prevented through efficient data management by expert analysts. Detectronic's practical approach to network flow monitoring is proven to work
- Deliver against your Outcome Delivery Incentives (ODIs) ahead of schedule
- Data Centre analytics can be 'retro-fitted', which means we can apply our processes to your existing data-flow, regardless of the make of monitors installed
- Detectronic's hydraulic analysis techniques expose locations where maintenance attention is required to prevent future problems
- Predictive intervention reporting will help you to jump forward an AMP Phase in Outcome Deliveries!
- It's not just about instrumentation - it's about extracting real value from your data!

For more information about Detectronic's products, systems and software please call, email or visit the website now.

Detectronic Limited  
Regent Street  
Whitewalls Industrial Estate  
Colne, Lancashire BB8 8LJ

T: 01282 449 124  
F: 01282 692 002  
E: [info@detectronic.org](mailto:info@detectronic.org)  
W: [www.detectronic.org](http://www.detectronic.org)

