



# LIDoTT<sup>®</sup> Sensor

INTEGRATED MULTI-SENSOR  
FLUID LEVEL MONITORING



UNIQUE MULTI- SENSOR DEVICE DELIVERS CONSISTENT **HIGH QUALITY LEVEL DATA** ACROSS A WIDE RANGE OF OPERATING CONDITIONS AND SWITCHES SEAMLESSLY TO PROVIDE **CONTINUOUS DEPTH DATA** UNDER BLOCKAGE OR SURCHARGE CONDITIONS.

## AFFORDABLE, ACCURATE AND RELIABLE

**LIDoTT®** integrates level, depth and temperature sensors into one compact device. **LIDoTT®** delivers high-quality data throughout **normal dry-weather** and **wet-weather** or **blockage induced surcharge conditions**.

### DESIGNED FOR CONVENIENCE

**LIDoTT®** is simple to install and ultra-low maintenance by design. It requires no external atmospheric breather for its pressure-sensor.

The enclosure is moulded from a carefully selected, resilient, naturally self-cleaning plastic polymer and is submersible.

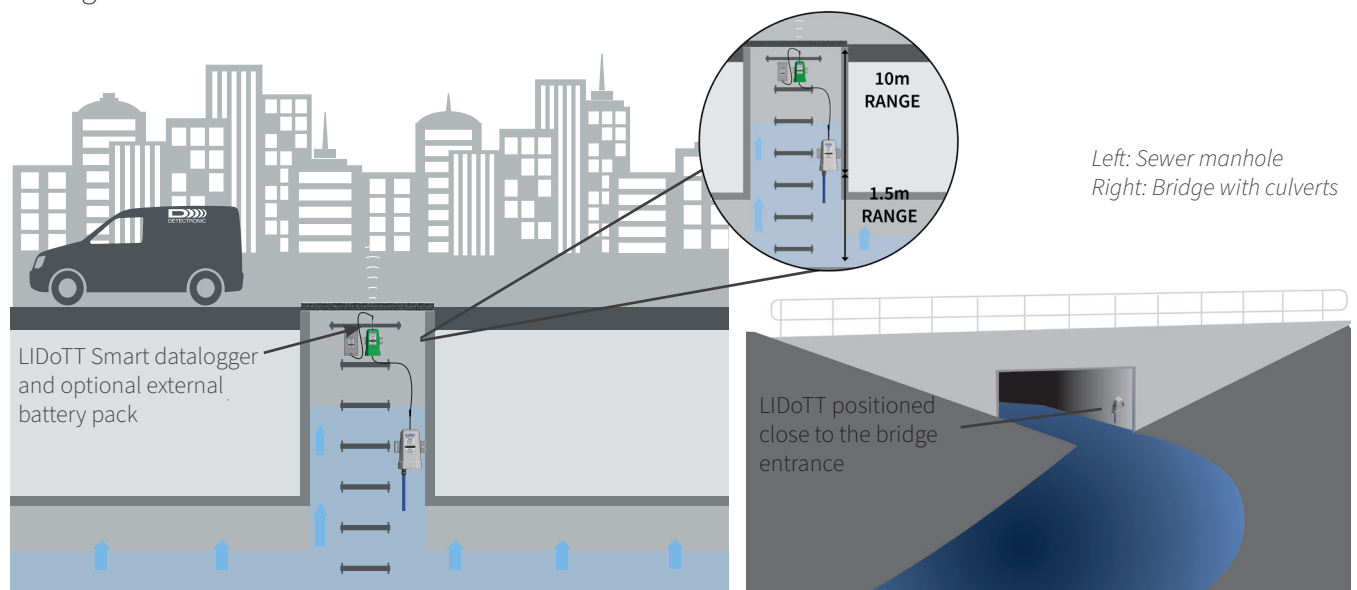
**ATEX and IECEx certified**  
Zone 0

### CONTINUOUS MEASUREMENT

When the sewer network is stressed during storm weather events or by blockages, the **LIDoTT®** Sensor **automatically switches sensor mode** from ultrasonic (level) to pressure (depth) as the liquid level rises, seamlessly delivering high-quality network management data. This transition is transparent to the external datalogging device which needs only a single recording channel.

## WIDESPREAD DEPLOYMENT

**LIDoTT®** is ideal for widespread deployment in sewer networks, in domestic sewer manholes and throughout other water courses.



## THREE SENSORS IN ONE

### ULTRASONIC LEVEL

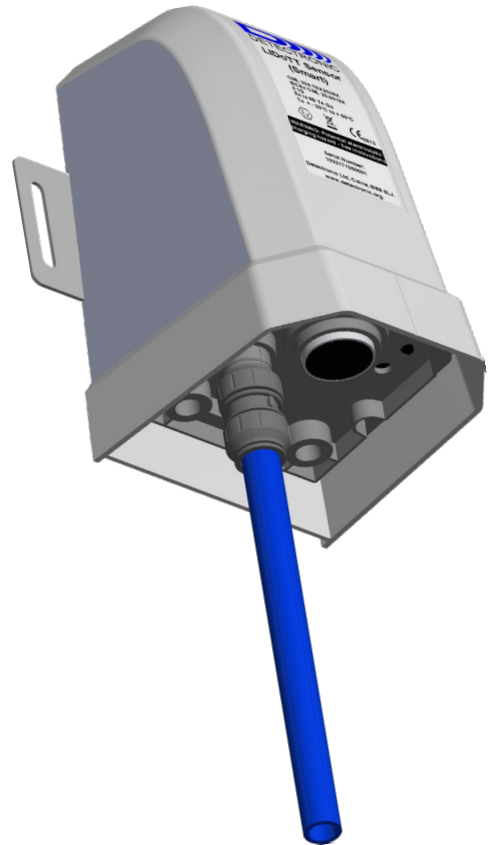
The LIDoTT® sensor reliably detects subtle changes in “normal” operating conditions – accurately delivering, for example, small silt-induced variations in Depth of flow.

### “IN AIR” TEMPERATURE

Primarily used to calibrate distance measurement for changes in air density, temperature can optionally be delivered to the datalogger as a measured parameter.

### PRESSURE

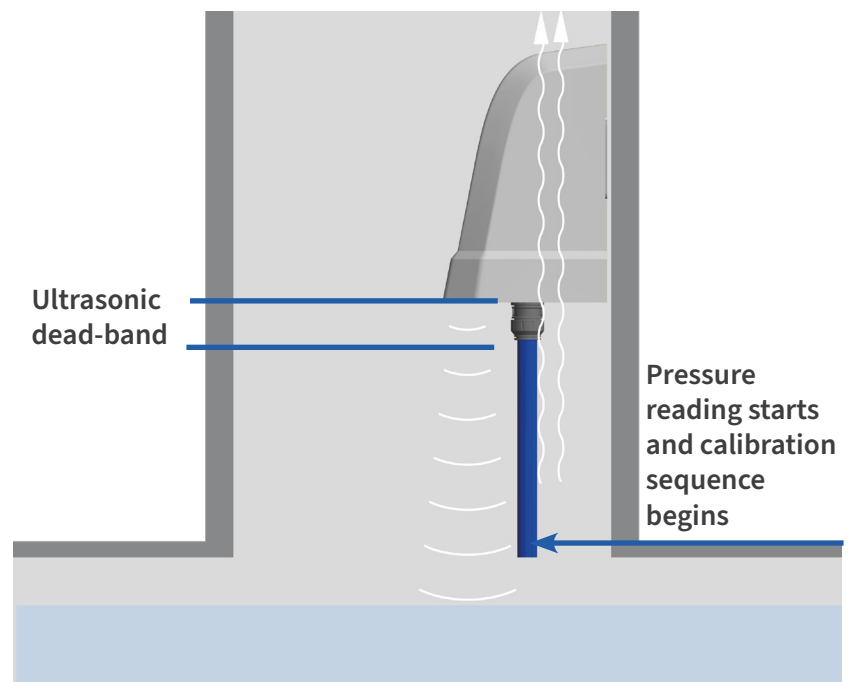
With its 10m H<sub>2</sub>O operating range, the pressure sensor deals with exceptional Depth measurement. **LIDoTT®** delivers seamless transition from Level measurement - using its Ultrasonic sensor, to Depth measurement – using its Pressure sensor. The pressure-sensor is activated and measures rising depth **before** the Ultrasonic sensor blanking distance (dead-band) is reached.



## HOW IT WORKS

As the liquid level rises, the ultrasonic sensor is in charge. Once the level reaches the bottom of the pressure sensor, pressure reading starts and a calibration sequence begins.

By the time the level enters the ultrasonic dead-band, the calibration sequence is complete and the calibrated pressure sensor takes over, delivering **continuous, accurate depth data**.





## DATA COMMUNICATIONS

The **LIDoTT**<sup>®</sup> Sensor communicates using a number of serial protocols including **Modbus** and will connect to many compatible data loggers.

- Real time monitoring helps you better understand your sewer network
- Automatic sensor switching enables continuous delivery of high quality network management data.
- Data logging device needs only a single depth recording channel.

## PRODUCT SPECIFICATION

### ULTRASONIC LEVEL SENSOR

Type: Piezo-ceramic, temperature-compensated  
Range: 0.000 - 1.500m  
Accuracy: +/- 2mm

### TEMPERATURE SENSOR

Type: High Precision CMOS Temperature device

### PRESSURE SENSOR

Type: Isolated Silicon Diaphragm  
Range: 0-10.000m  
Accuracy: ±0.2% FS

### ENVIRONMENTAL

Operating temperature: -20°C to +60°C.  
Protection: IP68/NEMA6P.  
Connectors: IP68 Mil - Spec.  
Dimensions: 200mm(h) x 125mm(d) x 115mm(w)

### APPROVALS

ATEX Zone 0 certified CML 20ATEX2039X  
IECEX Zone 0 certified IECEX CML 20.0019X  
II 1 G, Ex ia IIB T4 Ga. Ta= -20°C to +60°C

Patent Number: GB2591274

#### Detectronic Limited

Regent Street  
Whitewalls Industrial Estate  
Colne  
Lancashire BB8 8LJ  
United Kingdom

+44 (0)1282 449 124  
sales@detectronic.org  
www.detectronic.org

