



LIDoTT[®] ALARM

SEWER NETWORK ALARM MONITOR

SELF CONTAINED COST EFFECTIVE, WATER LEVEL MEASUREMENT AND ALARM DEVICE FOR SMART SEWER NETWORK MONITORING .

AFFORDABLE, ACCURATE AND RELIABLE

LIDoTT® ALARM integrates the Level sensor, battery, modem and Detectronic's unique Neptune antenna into one compact device. **LIDoTT® ALARM** alerts users to changes in wastewater depth enabling utilities to react quickly to blockages and surcharges caused by sewer collapses.

DESIGNED FOR CONVENIENCE

LIDoTT® ALARM is simple to install and zero maintenance by design.

The enclosure is moulded from a carefully selected, resilient, naturally self-cleaning plastic polymer and is submersible.

ATEX and IECEx certified
Zone 0

CONTINUOUS MEASUREMENT AND ALARM DELIVERY

Alarm threshold set-points are configured on site during installation. A "return to normal" message is sent when levels fall back below the Alarm threshold.

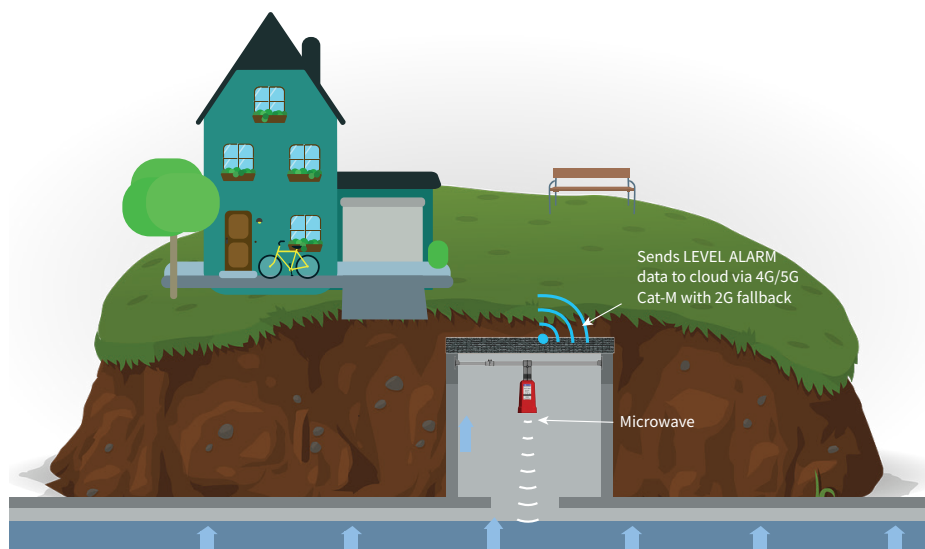
5 min or 15 min Level measurement sampling rates can be configured.

Optionally, logging at 15 minute intervals is available at extra cost.

A daily heartbeat message verifies the sensor is operational.

WIDESPREAD DEPLOYMENT

LIDoTT® ALARM is ideal for widespread deployment throughout sewer networks, and in domestic or lateral sewers. **LIDoTT® ALARM** is also suitable for deployment across other water courses. It offers up to 3 configurable level states e.g. normal, high level and high-high level (green, amber, red). **LIDoTT® ALARM** continues to provide the status on alarms as the liquid levels return to a normal range.



KEY FEATURES

RADAR LEVEL

The **LIDoTT® ALARM** integrates Detectronic's unique long-range radar sensor with a 5° beam angle (2.5° around axis).

ALL IN ONE

Sensor, battery, modem and unique antenna are all contained in a single IP68 enclosure. Fitted at the top of the chamber, no manhole entry is required.

NO DRILLING REQUIRED

Unique LIDoTT Alarm mounting brackets are designed to be fixed using fast setting adhesive. Brackets contain fixing holes for use where site conditions mandate.

EASY TO MOUNT

The **LIDoTT®** Laser pointer is temporarily clipped onto the fixing pole during installation to identify the measurement target and ensure the ideal sensor mounting position. Once marked, the **LIDoTT® ALARM** replaces the laser pointer and is locked into place. The whole assembly is easily removed and replaced in exactly the same position should future access to the chamber be needed.

REMOTE ADJUSTMENTS

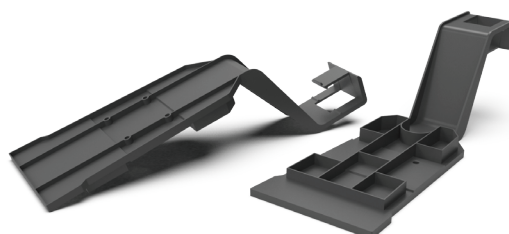
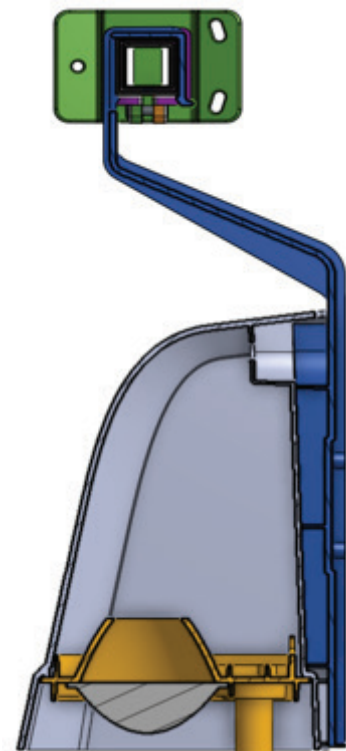
Alarm settings can be adjusted remotely over the air (OTA).

NO NUISANCE ALARMS

Programmable Hysteresis and Persistence for the Alarm Set-Point values reduce the risk of nuisance-alarming

LONG LIFESPAN

LIDoTT® ALARM delivers up to 7 years battery life.





ALARM COMMUNICATIONS

The **LIDoTT® ALARM** communicates using NB-IoT/Cat M1/M2 with 2G fallback.

- Precise microwave Level measurement ensures accurate Level Alarm triggering
- Three ALARM states available - Green, Amber and Red
- When breached each ALARM threshold will trigger an ALARM message send which includes current Level value - both going High **AND** when returning to Normal
- ALARMS are delivered via Detectronic Cloud - SMS, Email and Website with GIS options are all available
- Optional weather-managed ALARM-filtering via DetecAnalytics
- Optional Level data logging function - 15 minute intervals reported every 24 hours with latest data sent upon alarm
- Local configuration via Bluetooth enables easy set up

PRODUCT SPECIFICATION

LEVEL SENSOR

Type: Pulsed Coherent Microwave Radar (PCR)
 Range: Upto 8.4m
 Accuracy: +/- 2mm

ENVIRONMENTAL

Operating temperature: -20°C to +70°C.
 Protection: IP68/NEMA6P.
 Dimensions: 92mm (w) x 196mm (h)
 x 122mm (d)

COMMUNICATIONS

Internal Hi-Gain NB-IoT/Cat M/2G antenna

APPROVALS

ATEX - Zone 0
 IECEx - Zone 0

Detectronic Limited

Regent Street
 Whitewalls Industrial Estate
 Colne
 Lancashire BB8 8LJ
 United Kingdom

+44 (0)1282 449 124
 sales@detectronic.org
 www.detectronic.org

